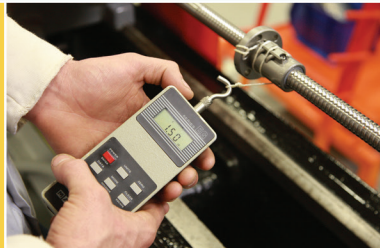
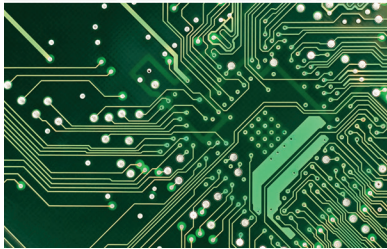




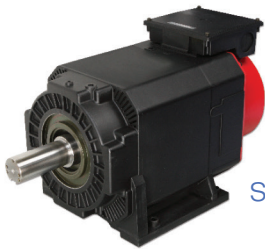
CNC Machine Component Repair



Broken Equipment? Fixed.

Keep your CNC machines running with PSI Repair Services.

PSI Repair Services is your fast and reliable source for CNC component repair and surplus parts. From drives, monitors, PCBs and transistors to control boards and pumps, PSI repairs CNC equipment from all the major manufacturers, like Allen Bradley, Fanuc, GE, Siemens, Mazak and more. Our experienced engineers and technicians use state-of-the-art diagnostic equipment to analyze why your equipment failed, and, in many cases, enhance the performance of a faulty OEM component with superior, more efficient technology to further extend the component's life. **Best of all, PSI can save you as much as 70% off the cost of buying new parts from the OEM. Call 800.325.4774 or visit psi-repair.com for details.**



Servo Motors

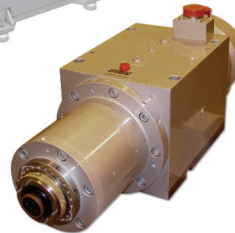


Call us today 800-325-4774

Electronics



Ball Screws



Spindles

Reduce your downtime with Surplus Parts and Emergency Services.

PSI also offers surplus parts and emergency services for customers that need to get their critical systems back up and running again as quickly as possible.

Call 800.325.4774 or visit psi-repair.com for details.



PSI REPAIR SERVICES, INC.

©2013 PSI Repair Services, Inc., is a subsidiary of Phillips Service Industries, Inc.



Component Repair Line Card

BALL SCREWS

Bryant
Cincinnati Milacron
Cross
Ex-Cell-O
Lamb
Giddings & Lewis
Kingsbury
Landis
LeBlond Makino
Mazak
Monarch
Okuma
Olofsson

ELECTRONICS

Allen Bradley
Fanuc
General Electric
Modicon
Mitsubishi
Siemens

HYDRAULICS

Cincinnati
Dynapower
Eaton
Gorman-Rupp
Goulds
Gusher
Oilgear
Parker
Rexroth
Sumitomo
Vickers

SERVO MOTORS

Allen Bradley
Fanuc
Franz Kessler
General Electric
Indramat
Kollmorgen
Yaskawa

VACUUM PUMPS

Alcatel
Beach-Russ
Busch
Edwards
Gardner Denver
Gast
Leybold-Heraeus
Nash
Roots
Siemens
Stokes
Varian



Electronic Repair Facility



Hydraulic Repair Facility

Call us for a quote!

800.325.4774



PSI REPAIR SERVICES, INC.

©2013 PSI Repair Services, Inc., is a subsidiary of Phillips Service Industries, Inc.

RSI-13-113 REV 10/03/2013

United States
11900 Mayfield
Livonia, Michigan 48150-1710
Phone: 800.325.4774

Canada—Ship to:
PSI Repair Services Inc.
C/O WWD - Kuehne & Nagel
3950 Malden Road Unit #5
Windsor Ont. CN N9C 2G4

Canada—Submit Payments to:
PSI Repair Services, Inc.
P.O. Box 21073
Windsor, Ontario N9B 3T4

psi-repair.com



ISO 9001:2008
CAGE CODE 5N884